

Southend Photographic Society

How to prepare your images for digital competition

How to resize your images!

Introduction

Confused by the rules for submitting your digital projection entry?

So was I when I first joined the society and have noticed problems when entries started arriving that apparently didn't conform with our society's rules.

The rules state that an allowable image is "JPEG, (.JPG) which will typically produce a file size of approximately 1Mb , with dimensions that do not exceed either 1400 pixels in width or 1050 pixels in height."

The following discussion will attempt to clarify what this means in practice. I will assume that everyone knows what a JPEG is and will focus on the other requirements. I will also assume that everyone knows what a pixel is.

Image files come out of your camera with a certain size in terms of pixel dimensions. The pixel dimensions can be set in your camera's menu system. For example, my 18 megapixel Canon has a maximum pixel size of 5184 x 3456, way way larger than what can be projected on our society's projector.

The projector is limited to showing images at the computer/laptop screen's pixel dimensions. If your image exceeds these dimensions, the computer will throw out some of the pixels (a process called "resampling" or "down-sampling") to reach the desired number, and that is what is projected. The bigger the image you send, the more pixels get thrown out, possibly affecting the quality of the projected image. That is why we ask you to resize to 1400 x 1050.

Note that for an image in portrait mode, height is greater than width but is still limited to 1050 pixels. For images which exceed this limit, height will be subject to down-sampling during projection and width will be down-sampled proportionally to maintain aspect ratio (nobody in the picture gets thin or fat). Note also that a square image no greater than 1050 x 1050 pixels is perfectly fine.

What you need

There are many programs available for managing graphics.

Some of the most popular are:

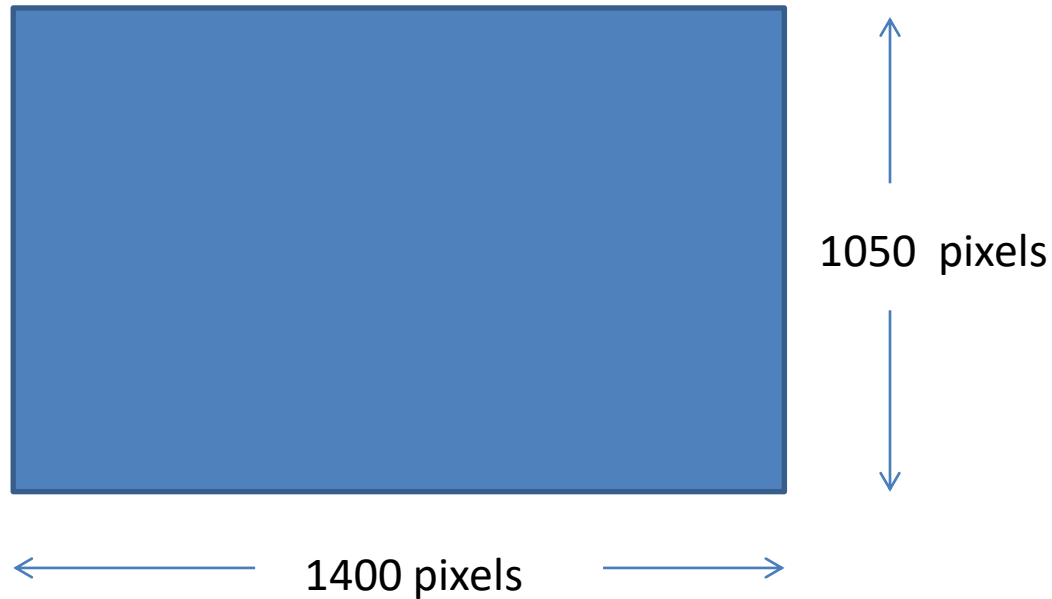
- Photoshop and Photoshop elements
- Corel Paintshop Pro
- Gimp (Free)
- Serif Photo
- Google Picasa
- Windows paint (*very limited*)

There is also this very useful resize tool, developed from Widows XP powertoys,
(*but may not work in windows 8*)

<http://sourceforge.net/projects/phototoysclone/>

What the projector displays!

- The projector displays in LANDSCAPE mode.
- It is calibrated to use the sRGB colour space



How to Keep your images within the RULES

- *The following is what is required by the competition rules:*
- Images can be in landscape or portrait .
- If in landscape it can be no wider than 1400 pixels wide. (up to 1050 high)
- If in portrait it can be no higher than 1050 pixels high. (so because it's a portrait its width is likely to be well under 1050 wide)
- For best results save and if need be convert your image to sRGB colour space, this is for compatibility with the club projector.

Note:

Aim to resize the image to have a Pixel Dimension of no larger than 1400 x1050. Any larger the computer will have to resize it to fit the projector and may slow down the computer. Pixel Dimensions are the important values when it comes to digital projection.

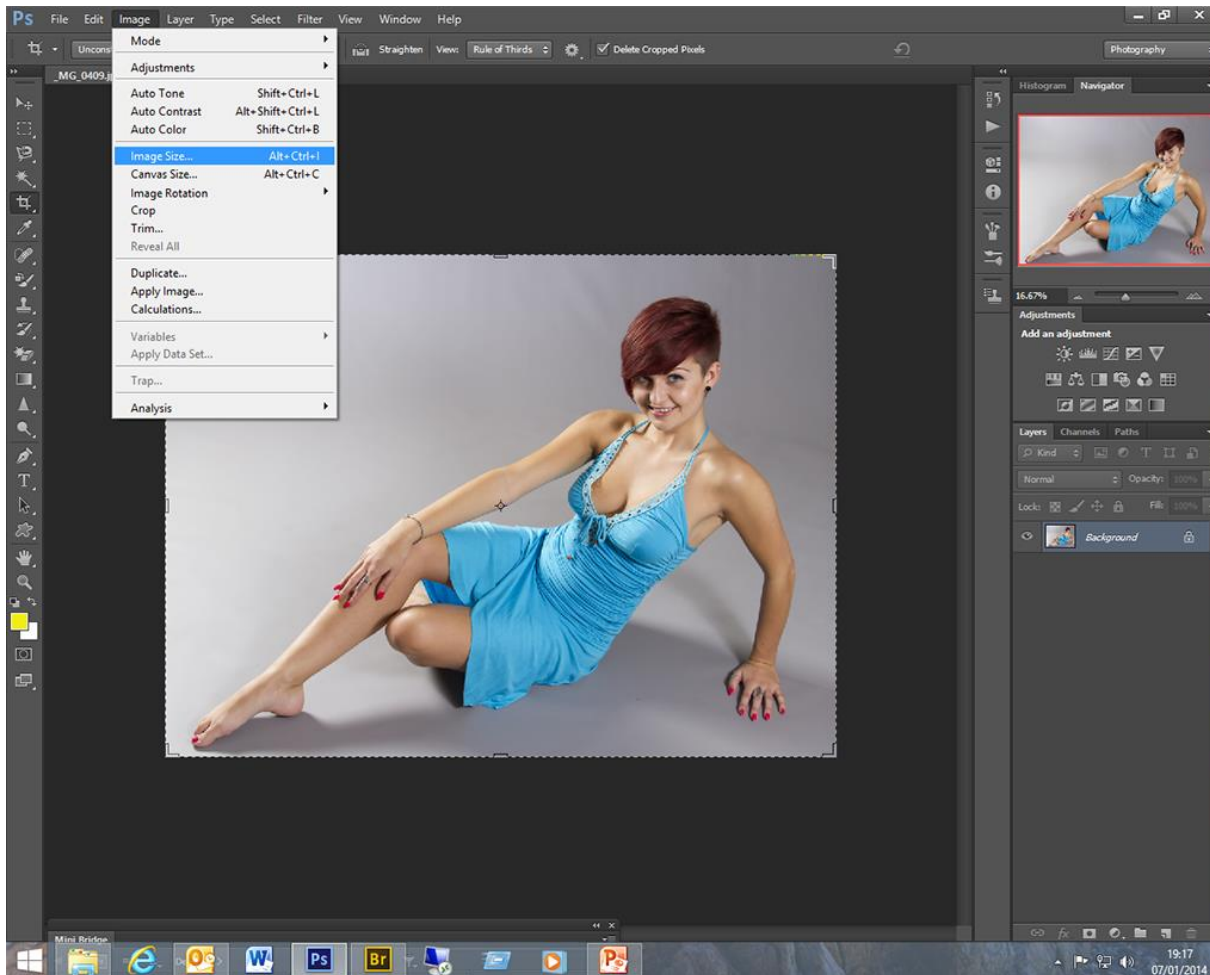
Pixels per inch (ppi) are of concern and only relate to the PRINTED product only!

As long as the Pixel Dimension of your image is no more than 1400 x 1050 you can set the resolution (ppi) to any value you like as it will not matter. PPI (Pixels per Inch) is sometimes referred to as DPI (Dots per Inch). It's the same thing. Most people use 72 dpi for projection 300 ppi for printing but it really has no effect on how the image is projected because you can't change the spacing between the pixels on the screen.

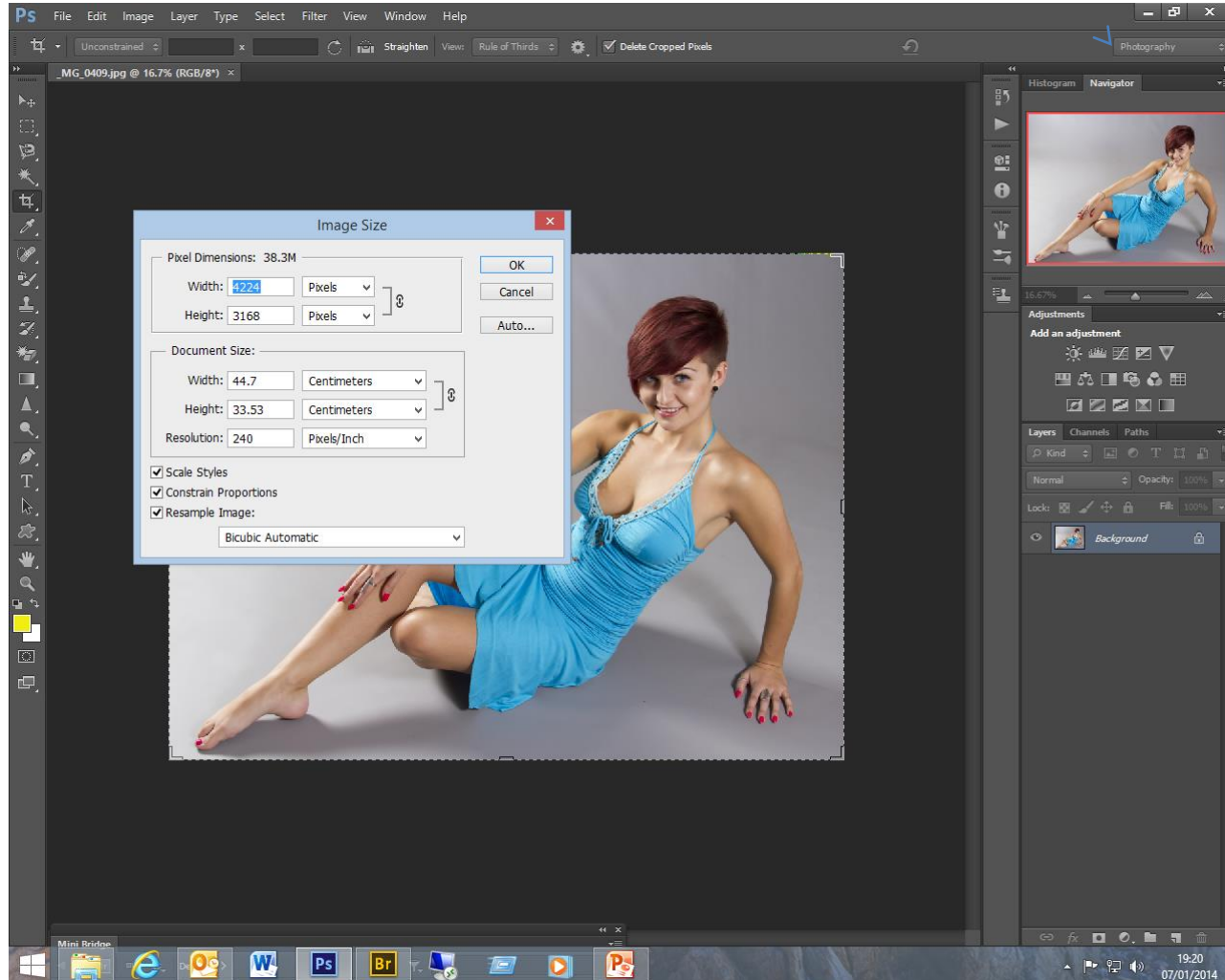
- Q.... Ok so I have to save my images to suit the projector, what if I crop my images and they are not landscape or portrait but square.
- A.... You need to resize them to 1050 x 1050 (as remember the projector displays at 1050 high not 1400 high. If 1400 x 1400 your image will not fit the height so the projector WILL down-sample your image.

How to resize your image.

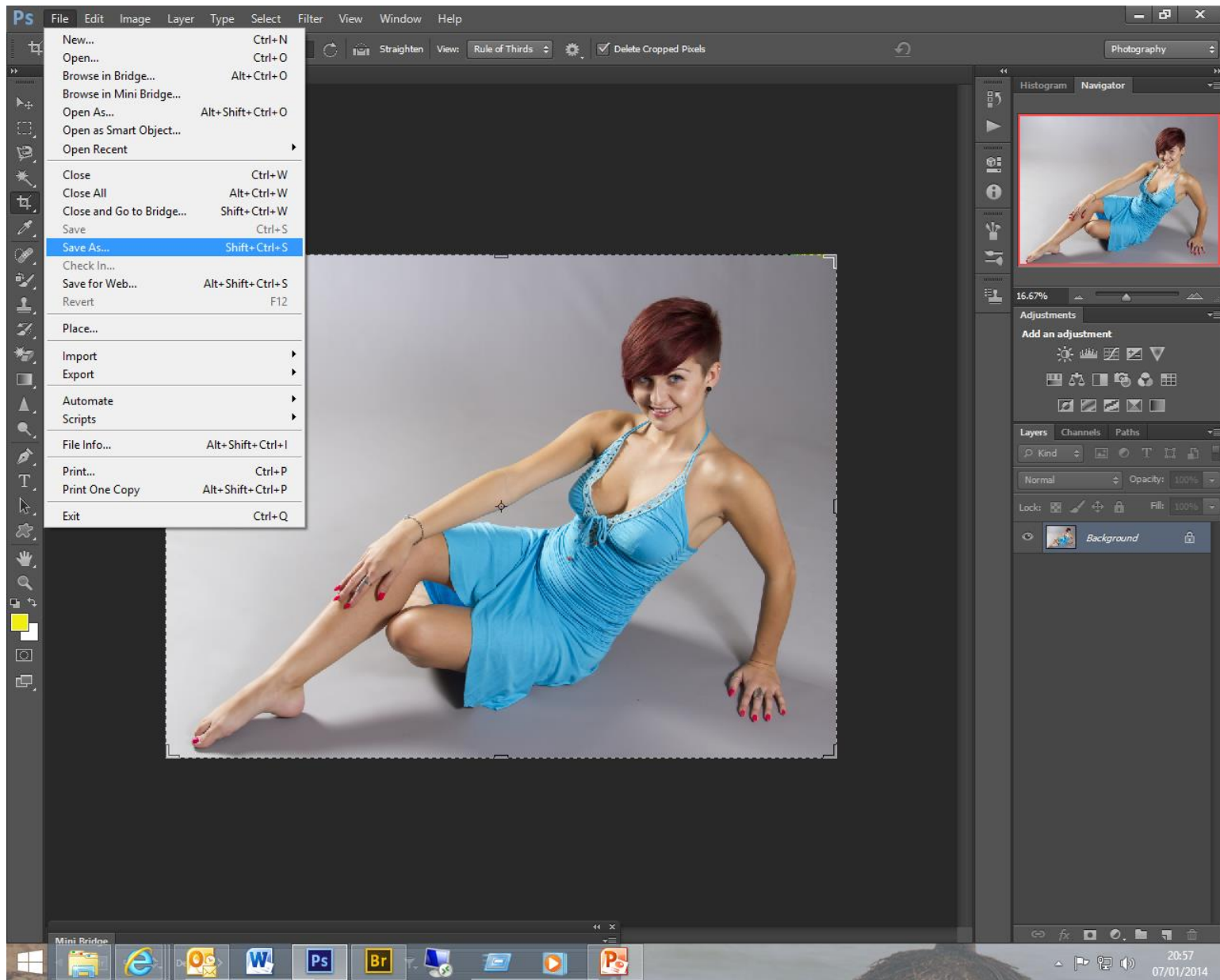
1. Select your file [Image, Picture] open it in the programme you use for editing your files i.e. Photoshop etc., make any corrections necessary, or go straight to 2.
2. Re-size your file by clicking on 'Image' then to image size in Photoshop
3. Click on "Image Size" a new dialog window will pop up.



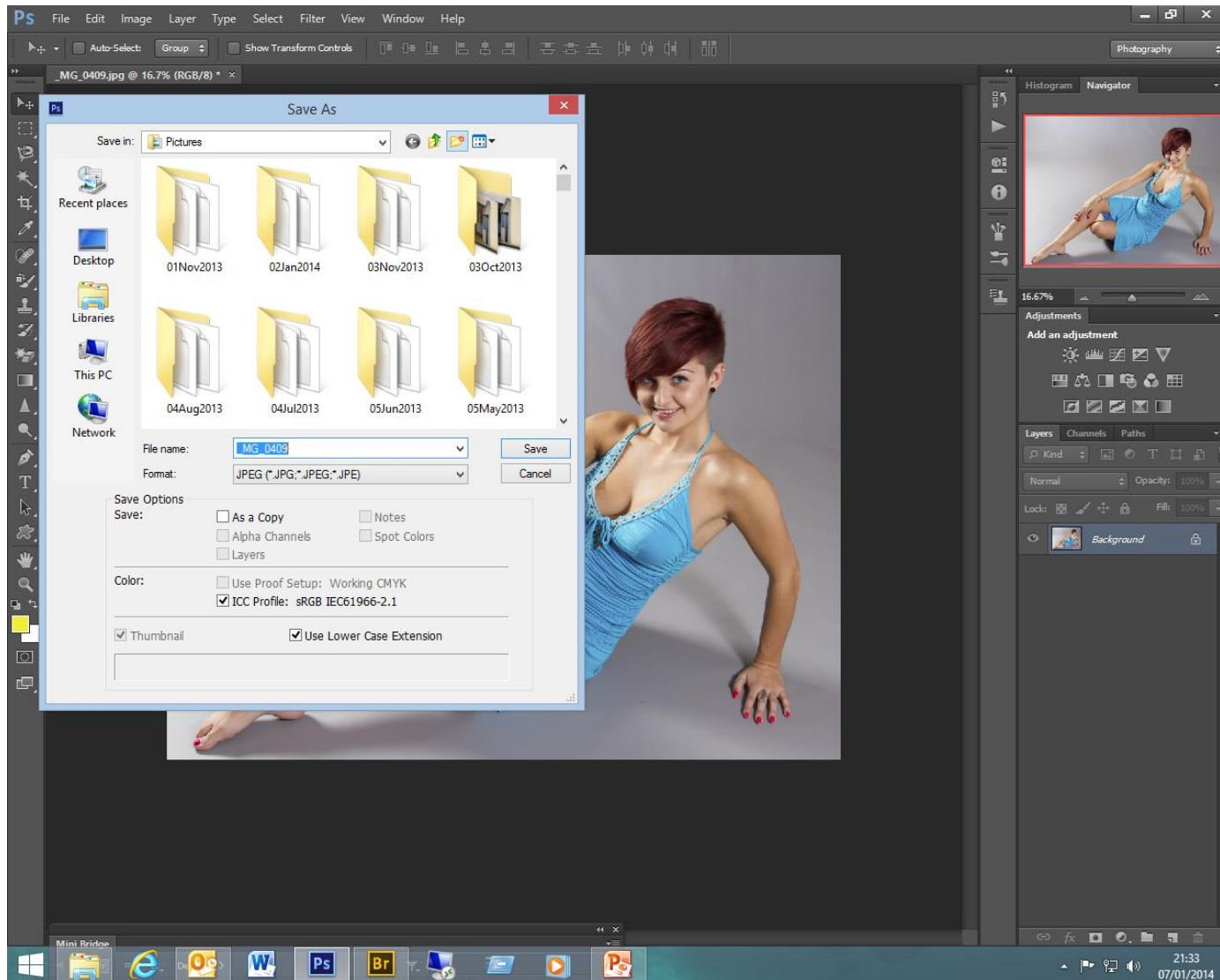
- In the Pixel Dimensions boxes enter Width 1400 if in Landscape mode, or Height 1050 if in Portrait mode,
- Ensure 'Constrained Proportions' is checked then, whichever mode you are in i.e.1400 or 1050 you will find the other dimension will automatically appear to keep the image in proportion,
- Click OK and the image will reduce in size, if you notice the image height is greater than 1050 you will need to type 1050 in the height box. This will resize your image in width to smaller than 1400 to keep the image in proportion .
- You now need to save the image at its new size.



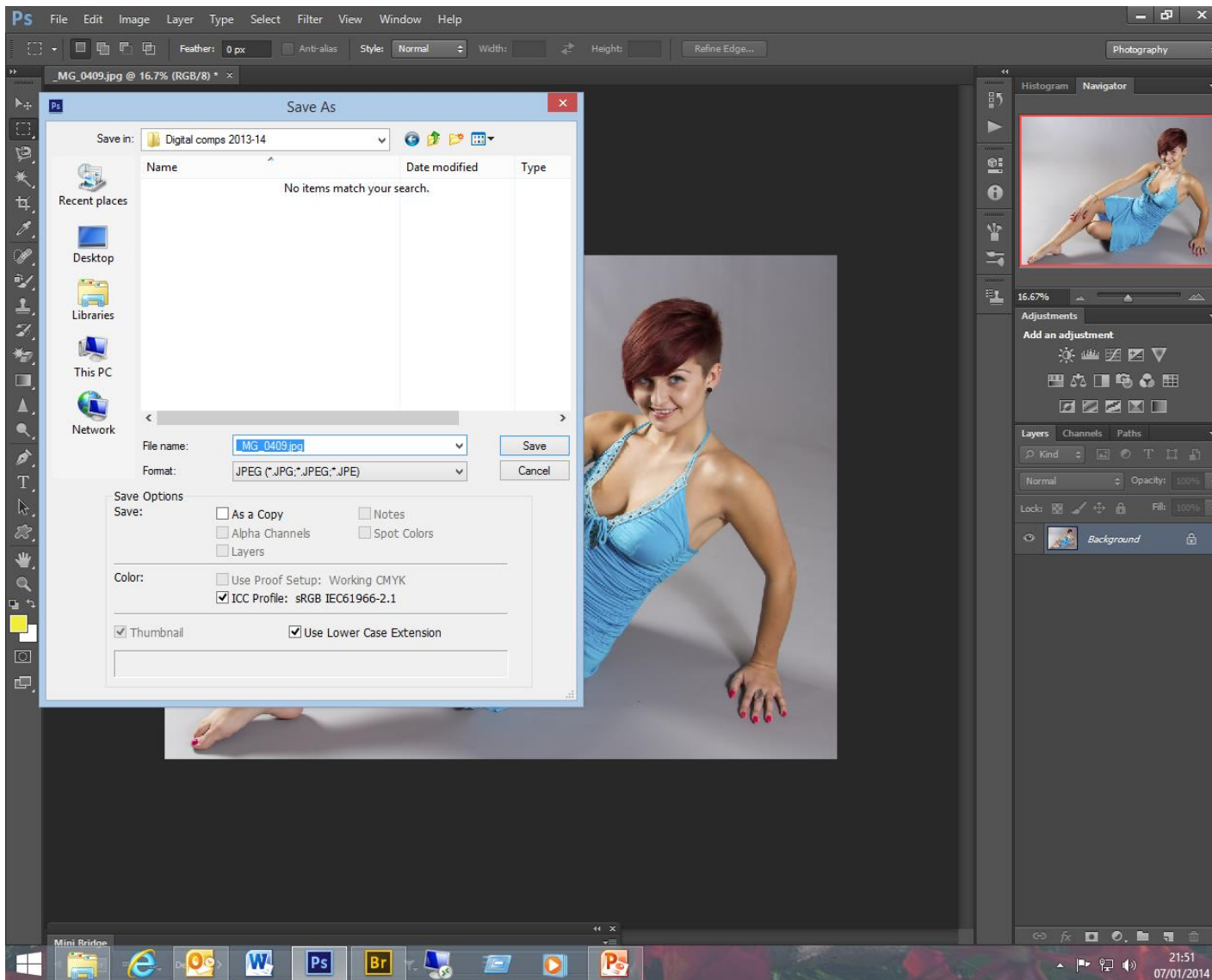
- 3. Go to 'FILE' select Save As



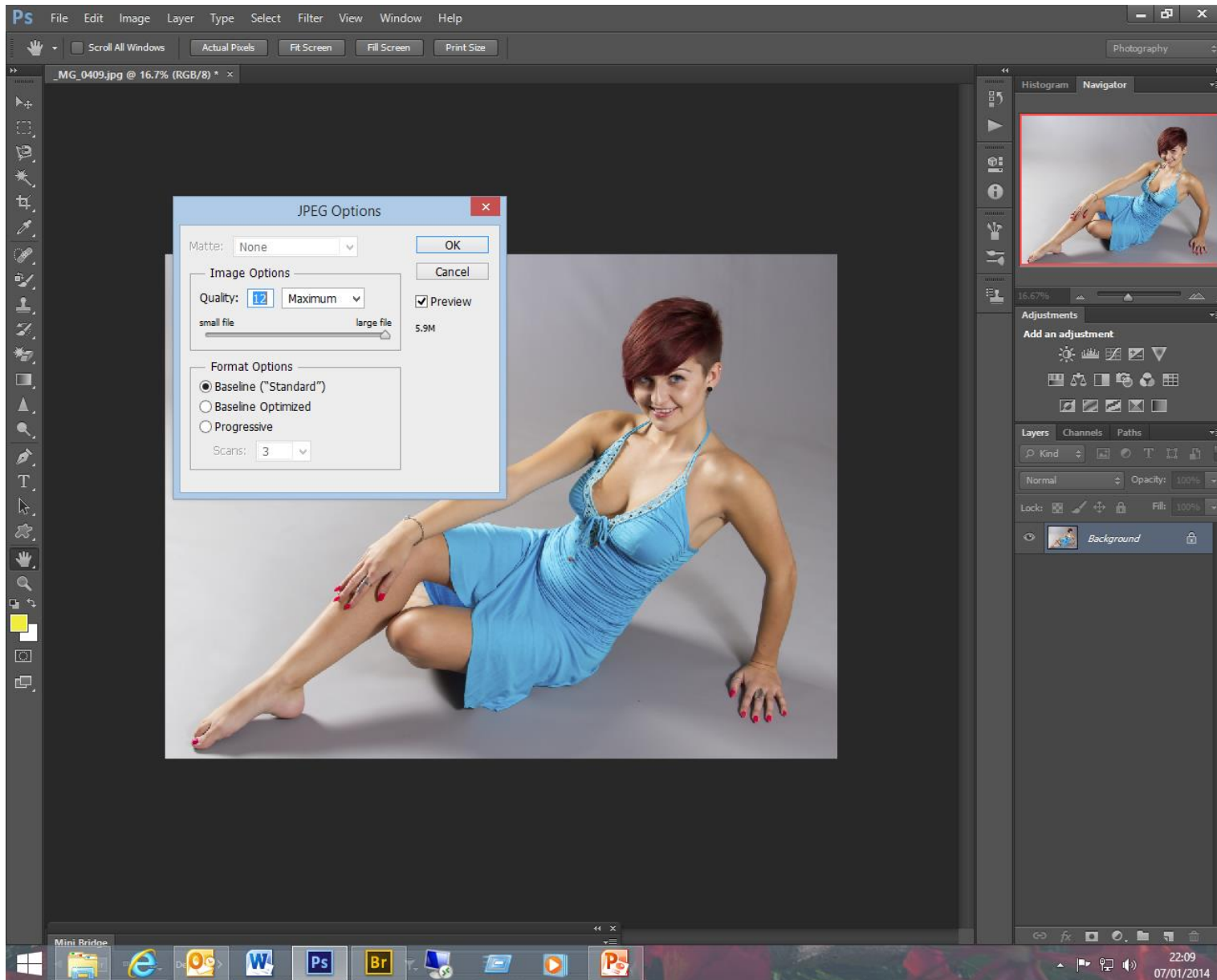
- A new window will pop up, you now need to choose where you want to save it.
- [Pictures etc.] create a new folder, title it, For example make a folder “digital competitions 2013-2014 “ then add each competition to that folder with digital 1, digital 2 etc. Result is that all your digital competition entries for the season are in one folder.



Click on this new folder to highlight it, you should now have the 'Save As' panel with a folder titled 'Digital Comps 2013-14', showing in the "Save in" dialog box and at the bottom 'FILE NAME' ; this is where you enter the title of your image. Check to see the color profile check box is ticked and set as sRGB and FORMAT is set to JPEG (.jpg).... Click save.



Having clicked on 'SAVE' a panel will appear titled 'JPEG OPTIONS', make sure the Quality is "12 maximum" click OK, job done, close Photoshop.

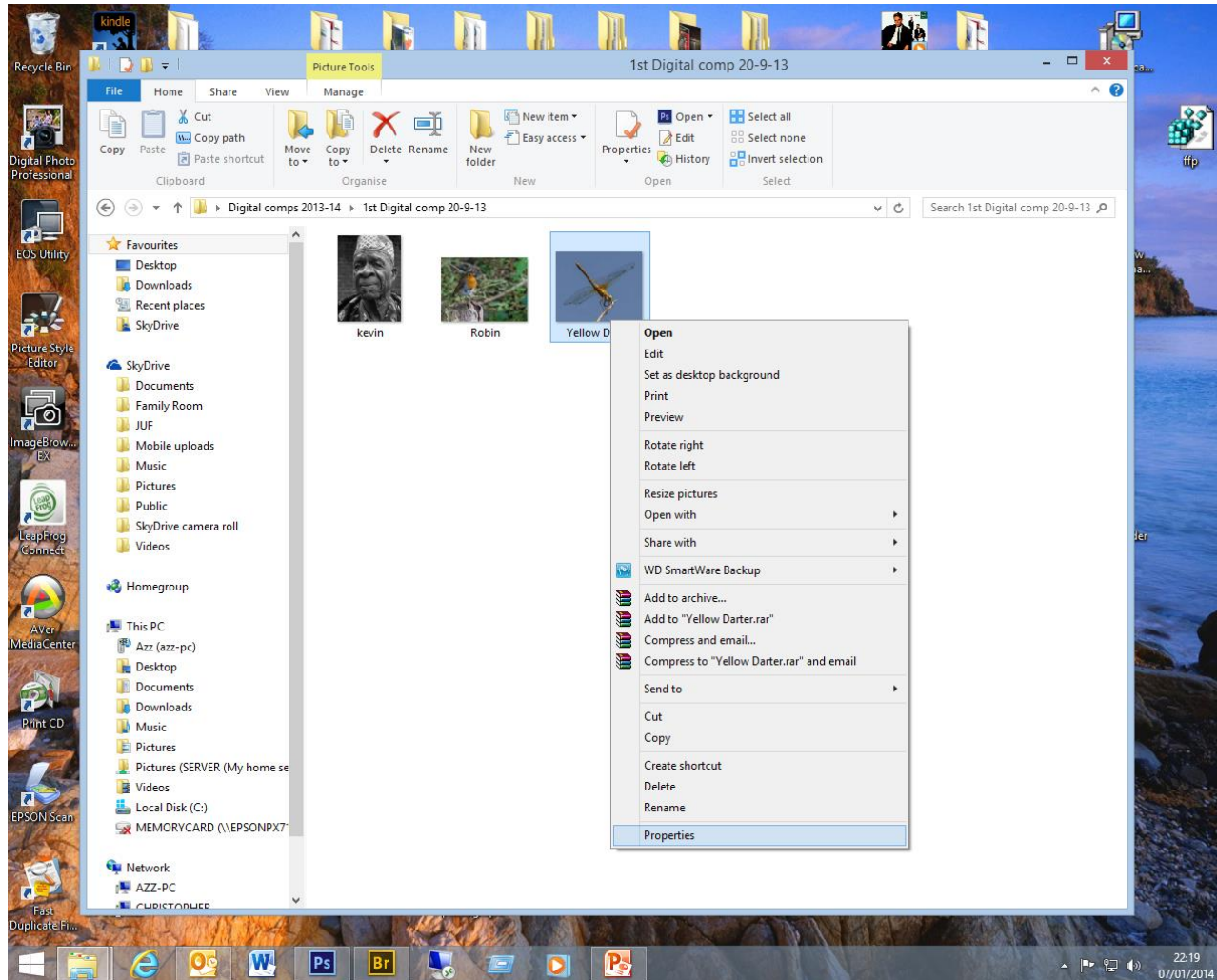


Adding your details to the files

4. You now have to add the Properties i.e. Title, Date of Comp, Author,

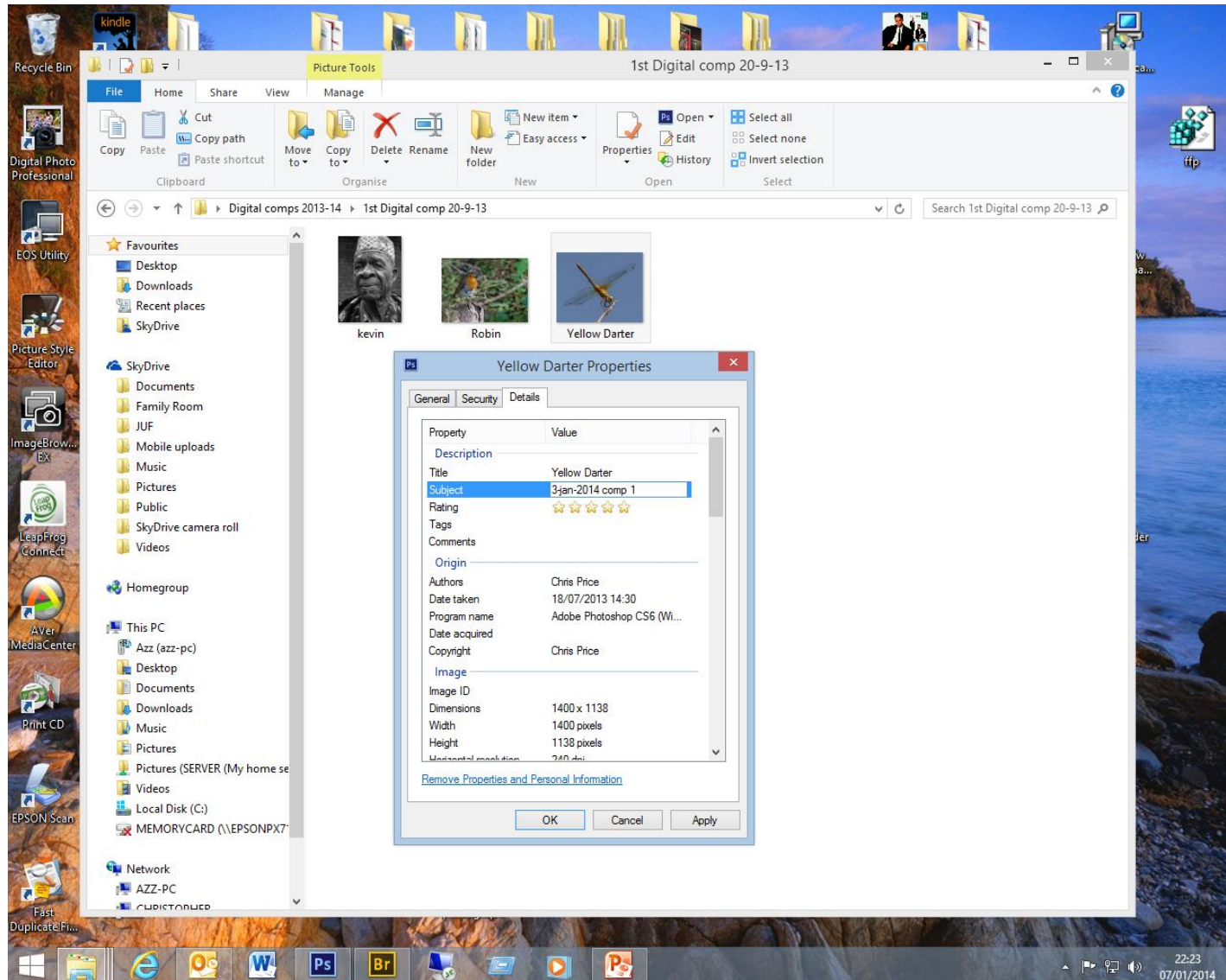
Go to Desk Top open folder in Windows or Explorer select the folder where your 3 competition images are located,

Select the first image, RIGHT click, select Properties, a panel will appear with tabs with headings 'General' and 'Summary' or ['Details'] click on Summary or Details,.



The panel will display:

- **'Title'**- enter the TITLE of your image
- **'Subject'**- enter date of competition and competition 1
- **'Author'** – Your Name, Make sure you enter your name exactly the same in all images otherwise you will not get a correct total score
.....click **APPLY**
- Remember clicking Apply saves your changes permanently.



Finally

Click OK at the bottom of the page, window will close.

Repeat this for the other 2 images in your entry.

5. When you have completed the above, copy your folder to a Memory Stick, and then check your Memory Stick to make sure it contains the folder with the images conforming to the above regulations.

You are now ready to submit your memory stick along with your competition entry form.

Final reminder: **NEVER WORK ON YOUR ORIGINAL FILE, ALWAYS WORK ON A COPY OF YOUR IMAGES** so if you do make a mistake you will still have your original file.

GOOD LUCK.

